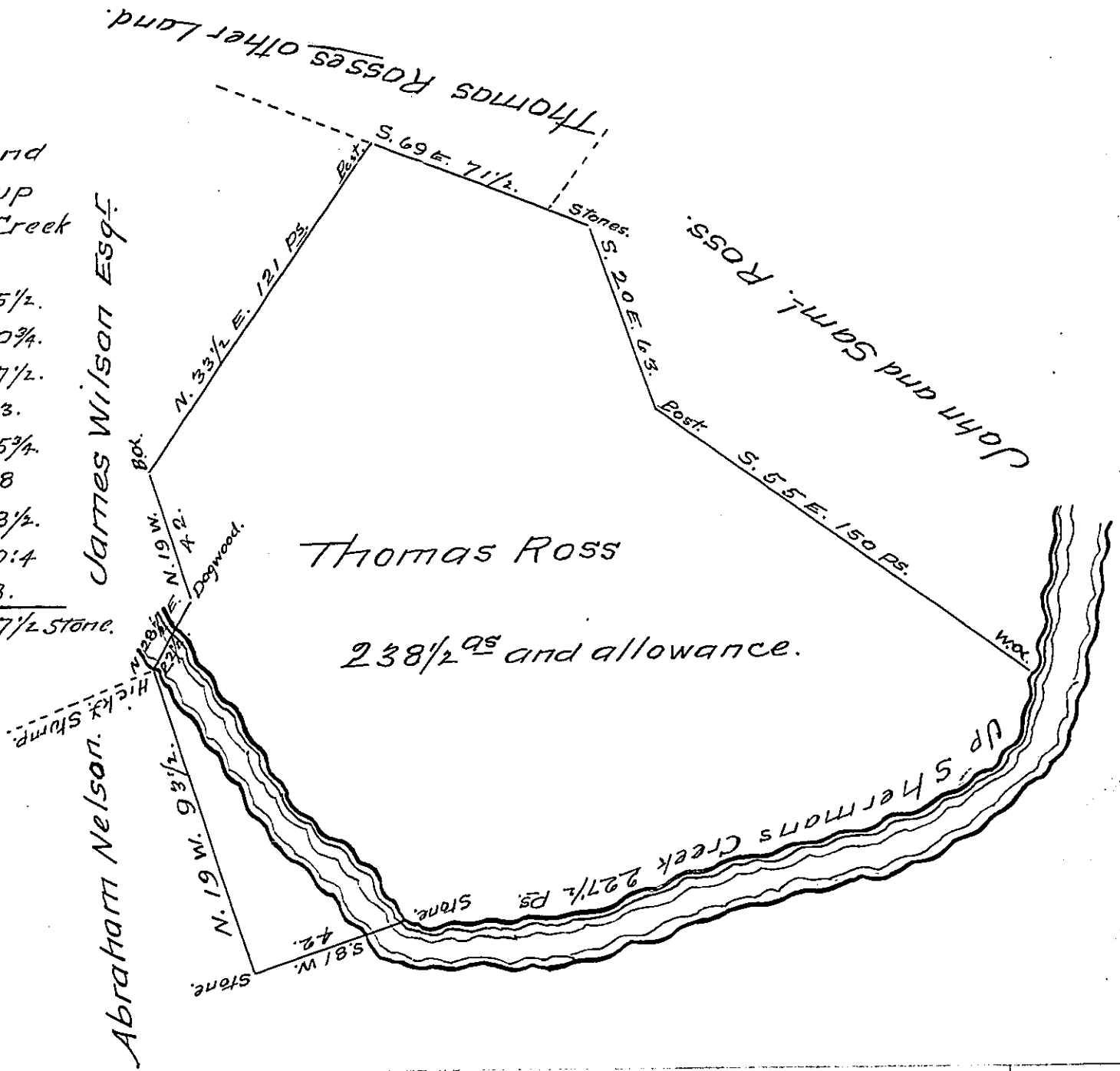


FORM No 1.

Courses and distances up Sherman Creek from w.d.

- S. 35 W. 35 1/2.
- S. 55 W. 20 3/4.
- S. 68 W. 17 1/2.
- S. 85 W. 43.
- S. 71 W. 35 3/4.
- S. 83 W. 28.
- S. 67 1/2 W. 18 1/2.
- S. 88 W. 20:4
- N. 63 W. 8.

227 1/2 Stone.



A Draught of a tract of Land Situate in Tyrone Township in Cumberland County Containing 238 1/2 ac and the allowance of six 7/8 Cent for Roads &c. Originally Surveyed to Thomas Ross in pursuance of a warrant dated the first day of June 1762 and Resurveyed the 30<sup>th</sup> day of May 1806 agreeable to an order of resurvey of the Board of Property dated 3<sup>d</sup> day of February 1806

To Samuel Cochran Esq. S.G. (obliterated) per D.S.

IN TESTIMONY that the above is a copy of the original remaining on file in the Department of Internal Affairs of Pennsylvania, made conformably to an Act of Assembly approved the 16th day of February, 1833, I have hereunto set my Hand and caused the Seal of said Department to be affixed at Harrisburg, this second day of October 1907.

Henry Houder  
Secretary of Internal Affairs.